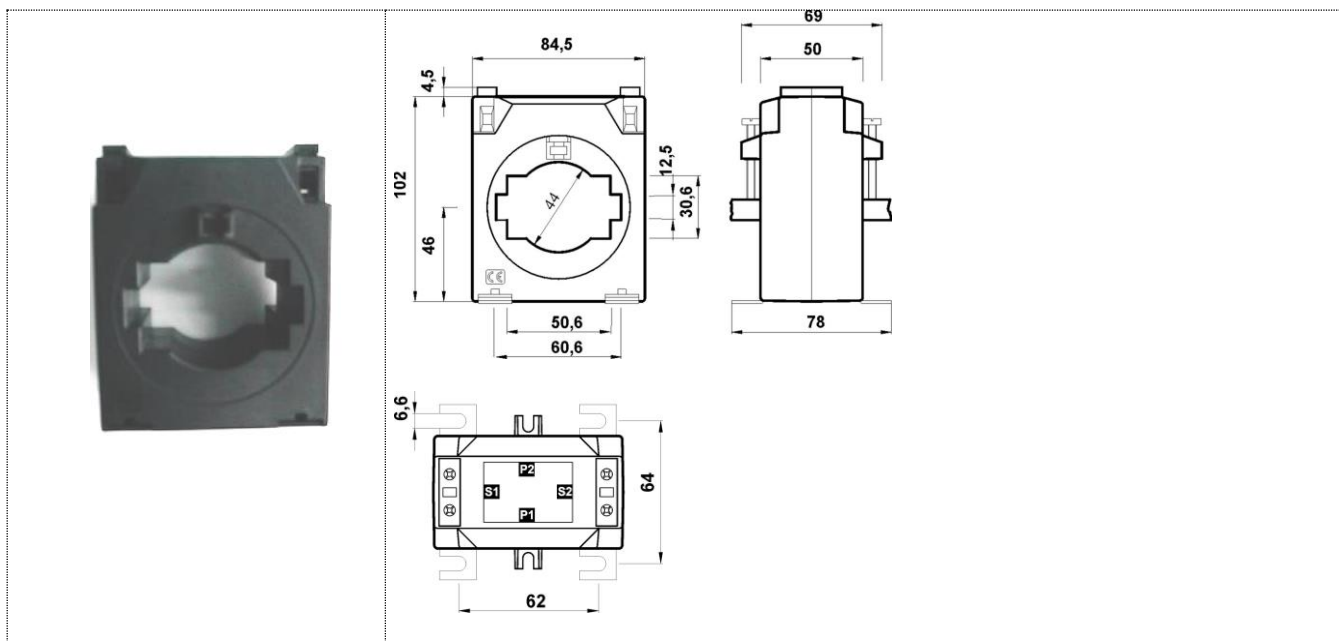


**TECHNICAL FEATURES PRODUCT**

**PRODUCT CURRENT TRANSFORMER TCH8 500/5 A**



<b>DESCRIPTION</b>	Measuring Current Transformer
<b>SECONDARY OUTPUT</b>	TC terminals 4mm <sup>2</sup> solid wire or 6mm <sup>2</sup> stranded wire
<b>INNER WINDOW</b>	Cable Ø44 mm or busbar 60x12, 50x30mm
<b>CASE</b>	Polycarbonate Enclosure V0.
<b>APPLICATION</b>	indoor
<b>MARKED</b>	Plate of characteristics. Label in grey poliéster 38X26 mm
<b>ACCESORIES</b>	Steel mounting brackets.
<b>PACKED</b>	Cardborad Box
<b>STANDARD</b>	I.E.C. 61869-2

<b>RATIO CURRENT TRANSFORMER</b>	500 A / 5 A
<b>RATED BURDEN</b>	0.3-5 VA
<b>ACCURACY CLASS</b>	0,2S
<b>HIGHEST VOLTAGE FOR EQUIPMENT (Um)</b>	720 V <sub>ac</sub>
<b>DIELECTRIC TEST VOLTAGE</b>	3 kV during 1 minute
<b>RATED SHORT-TIME THERMAL CURRENT</b>	$I_{th} = 60 \cdot I_n$
<b>RATED DINAMIC CURRENT</b>	$I_{dyn} = 2.5 \cdot I_{th}$
<b>FREQUENCY RANGE</b>	50 – 60 Hz
<b>THERMAL CLASS</b>	B(130 °C)
<b>WORKING TEMPERATURE</b>	-25/40°C

REDACTADO	11/12/2018	<b>CURRENT TRANSFORMERS</b>	SUSTITUYE	
VERIFICADO	11/12/2018		SUSTITUIDO POR	

**TECHNICAL FEATURES PRODUCT**