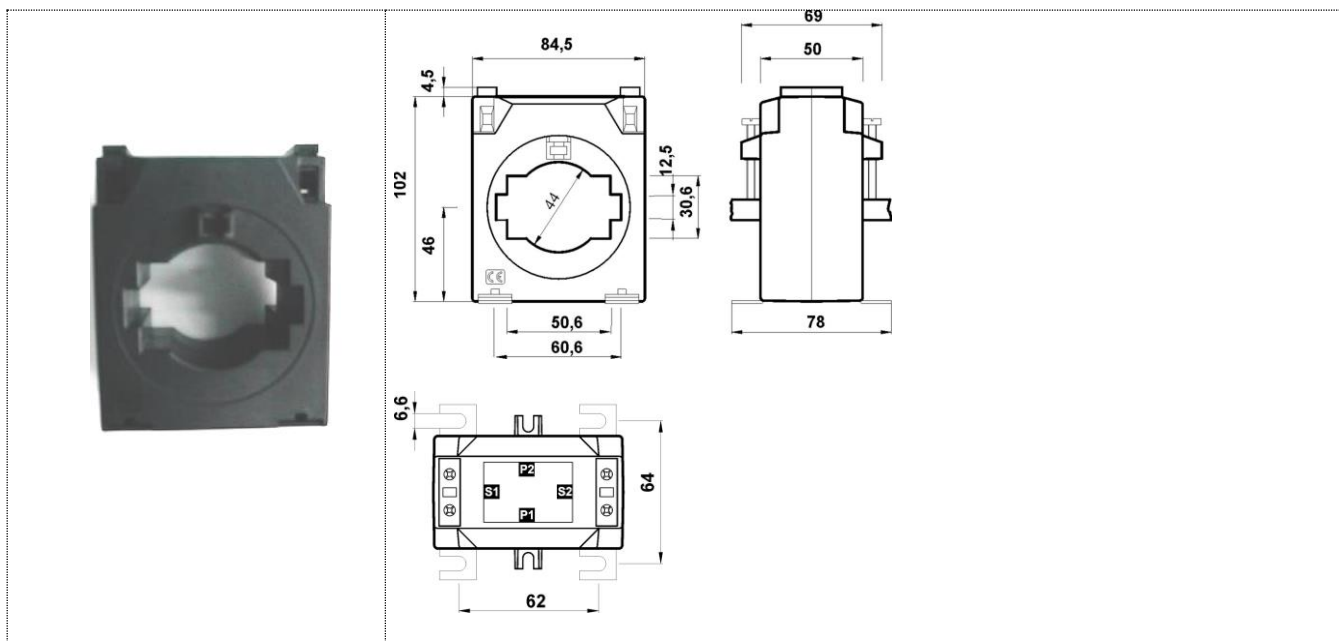


TECHNICAL FEATURES PRODUCT

PRODUCT CURRENT TRANSFORMER TCH8 1000/5 A



DESCRIPTION	Measuring Current Transformer
SECONDARY OUTPUT	TC terminals 4mm ² solid wire or 6mm ² stranded wire
INNER WINDOW	Cable Ø44 mm or busbar 60x12, 50x30mm
CASE	Polycarbonate Enclosure V0.
APPLICATION	indoor
MARKED	Plate of characteristics. Label in grey poliéster 38X26 mm
ACCESORIES	Steel mounting brackets.
PACKED	Cardborad Box
STANDARD	I.E.C. 61869-2

RATIO CURRENT TRANSFORMER	1000 A / 5 A
RATED BURDEN	0.3-5 VA
ACCURACY CLASS	0,2S
HIGHEST VOLTAGE FOR EQUIPMENT (Um)	720 V _{ac}
DIELECTRIC TEST VOLTAGE	3 kV during 1 minute
RATED SHORT-TIME THERMAL CURRENT	$I_{th} = 60 \cdot I_n$
RATED DINAMIC CURRENT	$I_{dyn} = 2.5 \cdot I_{th}$
FREQUENCY RANGE	50 – 60 Hz
THERMAL CLASS	B(130 °C)
WORKING TEMPERATURE	-25/40°C

REDACTADO	11/12/2018	CURRENT TRANSFORMERS	SUSTITUYE
VERIFICADO	11/12/2018		SUSTITUIDO POR

TECHNICAL FEATURES PRODUCT